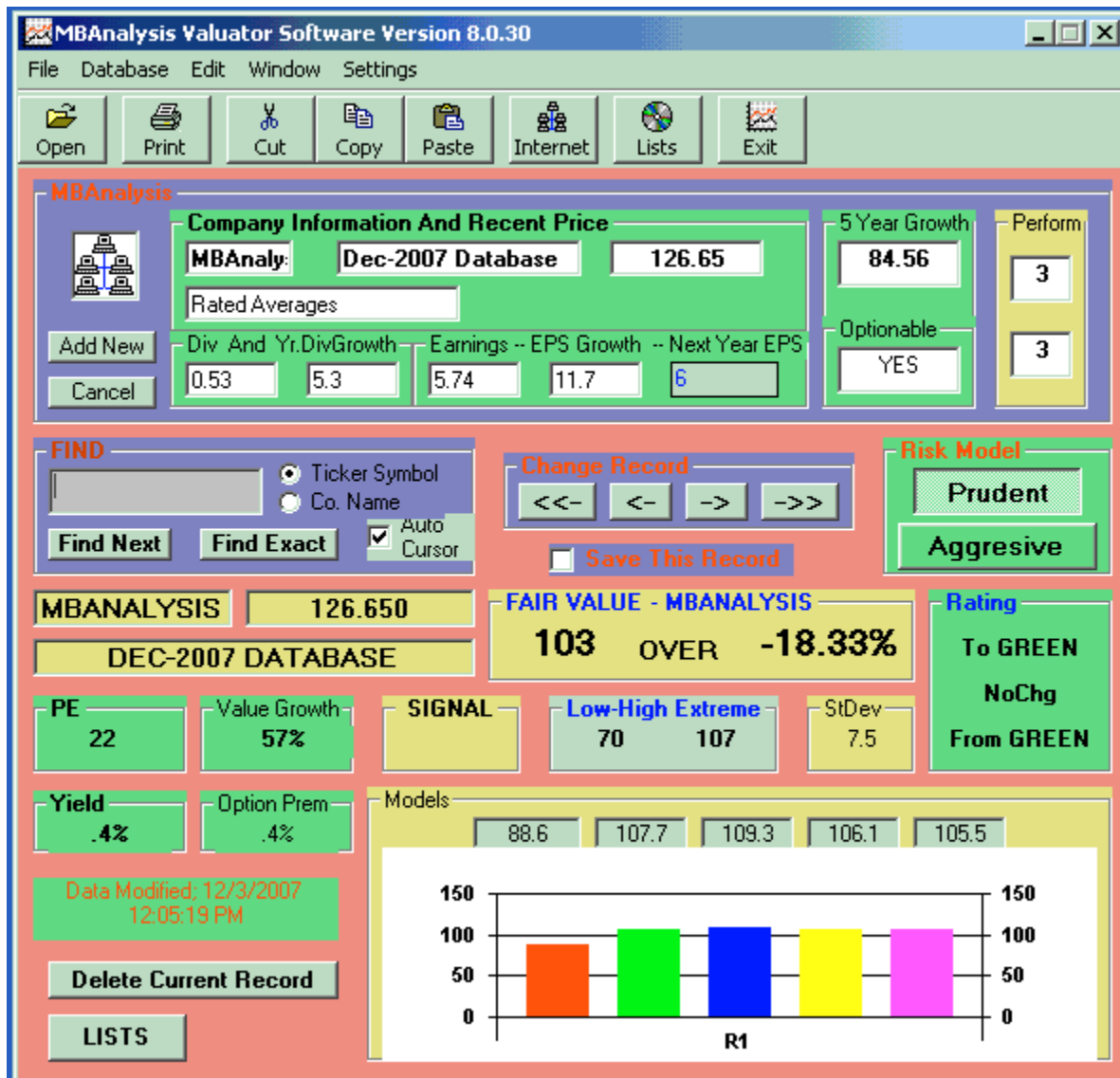


MBAnalysis VALUATOR

Version 2010

User's Manual



Valuation Software Offered Though MBAnalysis

1-386 447-8148
International And Software Support
386 447-8148

Important Notice - Please Read License Agreement Carefully

MB Analysis Copyright © 1997-2010, by *MBAnalysis*. All Rights Reserved

BY USING THIS INFORMATION, YOU INDICATE YOUR ACCEPTANCE OF THE FOLLOWING:

NEITHER *MB Analysis*, *MBAnalysis*., NOR ANYONE ELSE INVOLVED IN CREATING, PRODUCING, OR DISTRIBUTING THIS PRODUCT WARRANTS THAT IT WILL SATISFY YOUR REQUIREMENTS FOR INVESTING OR THAT THE PRODUCT WILL BE ERROR-FREE. THIS PRODUCT IS DISTRIBUTED “AS IS” WITHOUT WARRANTIES OF ANY KIND, EITHER EXPRESSED OR IMPLIED, INCLUDING BUT NOT LIMITED TO WARRANTIES OF MERCHANTABILITY OR FITNESS FOR A PARTICULAR PURPOSE OR USE. NEITHER *MB Analysis*, *MBAnalysis*., NOR ANYONE ELSE INVOLVED IN CREATING, PRODUCING OR DISTRIBUTING THIS PRODUCT SHALL BE LIABLE FOR ANY DIRECT, INDIRECT, INCIDENTAL, SPECIAL, CONSEQUENTIAL OR PUNITIVE DAMAGES, LOST PROFITS, LOST OPPORTUNITIES OR LOST SAVINGS ARISING FROM THE USE OF THIS PRODUCT.

NO PART OF THIS *MBAnalysis VALUATOR SOFTWARE* MAY BE COPIED OR DISTRIBUTED, TRANSMITTED OR TRANSCRIBED, STORED IN A RETRIEVAL SYSTEM OR TRANSLATED INTO ANY LANGUAGE, IN ANY FORM OR BY ANY MEANS, ELECTRONIC , MECHANICAL, MAGNETIC, MANUAL OR OTHERWISE DISCLOSED TO THIRD PARTIES WITHOUT THE EXPRESSED WRITTEN PERMISSION OF *MBAnalysis*..

MBAnalysis. AND OR PERSONS OR ENTITIES CONNECTED OR RELATED TO IT MAY BUY OR SELL OR MAY HAVE BOUGHT OR SOLD ANY ISSUE OR ITS DERIVATIVE MENTIONED IN ITS REPORTS.

NO PERSON OR ENTITY CONNECTED TO *MBAnalysis*. OR THEIR FAMILIES RECEIVE OR WILL RECEIVE CONSIDERATION FOR PLACING OR OMITTING DATA IN THIS REPORT.

MBAnalysis. RESERVES THE RIGHT TO REVISE THIS VALUATOR SOFTWARE AND TO MAKE CHANGES FROM TIME TO TIME IN THE CONTENT HEREOF WITHOUT OBLIGATION OF *MB Analysis* TO NOTIFY ANY PERSON OR ORGANIZATION OF SUCH CHANGES. FACTUAL MATERIAL IS NOT GUARANTEED BUT IS OBTAINED FROM SOURCES THAT ARE CONVENTIONAL AND BELIEVED TO BE RELIABLE.

THE RAW DATA USED IN PRODUCING THESE REPORTS ORIGINATES FROM CONVENTIONAL SOURCES AND FROM INTERVIEWS BELIEVED RELIABLE AND TRUTHFUL. ERRORS IN CALCULATION, OF FACT AND OF ANALYSIS MAY REMAIN. SOURCES OF INFORMATION ARE BELIEVED TO BE RELIABLE, BUT THEY ARE IN NO WAY GUARANTEED TO BE COMPLETE OR WITHOUT ERROR. OPINIONS ARE SUBJECT TO CHANGE WITHOUT NOTICE. ALL OPINIONS, RECOMMENDATIONS OR SUGGESTIONS ARE GIVEN WITH THE EXPRESSED UNDERSTANDING THAT USERS ACTING ON INFORMATION SHALL ASSUME ALL RISKS INVOLVED.

THE VALUATOR™

User's Manual

Valuator 2010 *With Portfolio Report*

All Rights Reserved
Copyright © 1997-2010
MBAAnalysis

Printed in the U.S.A.

1-386 447-8148
International And Software Support
386 447-8148

Table Of Contents

<i>AN INTRODUCTION TO - THE VALUATOR - FROM MBANALYSIS:</i>	6
<i>INSTALLING THE SOFTWARE</i>	7
<i>INSTALLING CD-ROM DATABASE UPDATES</i>	7
INTERNET DATABASE DOWNLOAD UPDATES	7
<i>GETTING STARTED WITH THE VALUATOR</i>	8
<i>USING THE - VALUATOR SOFTWARE - AND VALUATION MODEL</i>	10
PORTFOLIO AND LIST REPORTER	13
PORTFOLIO REPORT DISPLAY	15
PRINT PORTFOLIO	16
DISPLAY PORTFOLIO	16
<i>KEEPING YOUR DATA UP-TO-DATE</i>	17
INTERNET DATABASE UPDATER	17
CHECKING FOR NEW DATA	17
INTERNET DATABASE SETTINGS	18
ADVANCED SETTINGS	18
<i>TROUBLESHOOTING INSTALLATION</i>	19

<i>TROUBLESHOOTING WIN 2007 VISTA XP 2000 WIN95-98 & NT INSTALLATION</i>	19
<i>UNINSTALLING</i>	19
<i>UNINSTALLING WIN2007 VIST XP 2000 WIN 95-98 & NT</i>	19
<i>TROUBLESHOOTING DATABASE UPDATES</i>	20
<i>DATA ENTRY AND CALCULATIONS</i>	20
<i>TROUBLESHOOTING PROGRAM BUGS</i>	20
<i>DEFAULT SETTINGS ADVANCED OPTIONS</i>	21
<i>DEFAULT SETTINGS DATABASE OPTIONS</i>	22
<i>DEFAULT SETTINGS INTERNET UPDATE OPTIONS</i>	23
<i>DEFAULT SETTINGS GENERAL OPTIONS</i>	24
<i>INDEX</i>	25

An Introduction To - The VALUATOR - From MBAnalysis:

The MBAnalysis Valuator Software provides the serious investor tools to assist in refining investment decisions. We have developed methods that combine fundamental and technical analysis to accomplish that goal.

We have found that opportunities exist in one or more industries at any time; therefore, we analyze individual companies, not industry groups. Our work searches for value that can be bought at a prudent price.

We use a fundamental, bottoms up approach and draw deeply from such classical writers as Graham & Dodd. Our proprietary models have yielded techniques that we have used profitably over the years. These techniques yield an accurate sense of a stock's Fair Value as well as low and high extremes that should contain nearly all price fluctuation.

In most cases technical analysis confirms our conclusions. Occasionally we receive aberrant values that signal us not to buy a stock whatever its fundamental value. We accept this advice and wait for a better day.

Our *Fair Value* sets the price at which an investor, acting from the prudent-man rule, might profitably acquire a stock. Selling decisions are a difficult matter, best determined by the level of risk and over-valuation an investor will tolerate, the amount of profit sought, or the anticipated time horizon for holding a specific issue.

MBAnalysis cannot assign a level of risk useful for investors. That decision depends upon factors which are confidential as well as extraneous to our analysis. Prudent and Aggressive Modeling is included to accommodate differing Risk Tolerance expectations.

We assume our investors understand that they alone, assume all risks involved with their investment decisions.

MBAnalysis Valuator Software covers a broad spectrum of more than 1800 investment possibilities ranging from well known, large capitalization-international corporations, to medium capitalization companies, to small innovative special niche companies.

Whether you are a conservative long term low risk investor or a high risk aggressive trader, *MBAnalysis Valuator Software* could help you achieve your investment goals.

INSTALLING THE SOFTWARE

For Windows 2007 Vista XP NT and 95-98 2000-8: From the **START** menu, select **RUN**.

ALWAYS INSTALL To The Default Directory.

1. Insert the Installation Disk 1 in the computer's floppy drive (or the CD into the CD ROM drive).
2. Press **START** select **Run**
3. In the Command line box, type the letter for your computer's floppy disk drive (if using floppy disks) or CD ROM drive (if using the CD), followed by **:SETUP** (for example A:\SETUP or D:\SETUP).
4. Click **OK** and follow the instructions on your computer screen.

INSTALLING CD-ROM DATABASE UPDATES

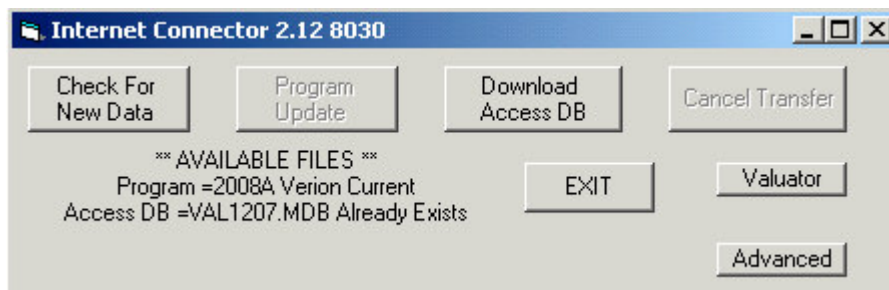
For Windows 2007 Vista XP NT and 95-98 2000-8: *

Select the diskettes marked Database:

1. Insert the Database Disk 1 in the computer's floppy drive (or the CD into the CD ROM drive).
2. From the **START** menu, select **RUN**.
3. In the Command line box, type the letter for your computer's floppy disk drive (if using floppy disks) or CD ROM drive (if using the CD), followed by **:DATALOAD.BAT** (for example A:\DATALOAD.BAT or D:\DATALOAD.BAT).
4. Your Data Will Be Updated To The \Program Files \VALUATOR Directory.
When Prompted enter the Drive Letter For your Update Diskette

****YOU MAY ALWAYS INSTALL THE DATABASE UPDATE BY COPYING ALL FILES TO YOUR DEFAULT INSTALLATION PROGRAM DIRECTORY.***

Internet Database Download Updates



From the main Valuator Screen Select Either Icon



Click **CHECK FOR NEW DATA** Button

Getting Started With The Valuator

Data Entry. To enter data into an accessible field, place the cursor in the data Field you wish to modify, and press the left mouse button to select the field. Enter your new data, or delete the exiting value and enter your own. Press the ENTER KEY and the valuation will recalculate using your values.

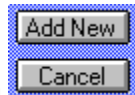
The User May Change Values for The Database Only in The Upper Half of the screen entitled: The Database.

The screenshot shows a window titled 'The Database' with a green background. It is divided into several sections:

- Company Information And Recent Price:** Contains text boxes for 'IBM', 'INT'L BUS MACH', and '95.4375'. Below these is a text box for 'Computer/Periph'.
- 5 Year Growth:** A text box containing the value '45'.
- Div And Yr.DivGrowth:** Text boxes containing '0.8' and '14.5'.
- Earnings -- EPS Growth -- Next Year EPS:** Text boxes containing '6.37', '15.5', and '7.36'.
- Optionable:** A text box containing 'CBOE'.

In Addition, you may not change the Symbol Or Company name for Tickers already in the Database. If you wish to change these fields, you must Add a New Record. In The Add Record Mode these fields are able to be entered. The Order of the database is determined by the Company name.

After Entering a new value for one of the fields in the Database Window. Hit ENTER to recalculate the valuation data. You may run as many what if tests as you wish, data will only be permanently saved in the database if you check the Save THIS Record Check Box **Save This Record** and then move to a different record.



The Cancel button will not undo changes that have been permanently saved to the database.

If no changes are to be saved, leave the checkbox **Save This Record** empty or click it to deselect it. If you want to see the original values, move to a different record then move back, the original values will again appear and calculate.

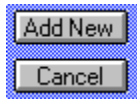
Saving Your Changes. Once you set a change in the database and Save it, the values are permanently changed in the database. The only way to recover the original values, is to reload the original database from your DATABASE DISK, thus loosing All changes you have made. In addition All Records You Have Added will need to be reentered. This is because you will be reinstating the original data provided by us.



The Prudent and Aggressive Model Selections. Prudent or Aggressive models will say in the mode you select for all stocks until you change it. Values always recalculate as you change between Prudent and Aggressive. Because there is only one set of input values in the database, any changes made in one model will apply to the other. Separate input values are not maintained for the two risk models. If you wish to maintain separate Input Values to use for one stock, you must enter duplicate records with a unique ticker symbol. For example, If you have data in the database of IBM and wish to maintain another set of input values, you must name the new record IBM1 or some other unique symbol for your duplicated data. You may then access that data by finding the symbol you have assigned.



Using the Forward and Back Record Navigator. Press Forward Record -> or Back Record <- and the database record will advance to the next or previous record. Once you have clicked the forward or backward button, you can continue to move forward or backward one record at a time with the press of the ENTER key. The ENTER key will continue advance or reverse records until you select another input box or function.



Adding Records Or Accessing User Records. The Ticker field is a unique identifier for each stock. If you add a record with a Ticker Symbol that is already in the database, you will likely only be able to access the first incidence of the ticker in the database. All new records added to the Database, are added to the End Of The File in the active Database. Therefore to access a duplicate record, added by the user with a preexisting symbol, You must MANUALLY move to the End Of File (->>) and backspace through the records until you find the record you have added. You may delete the original record, then your newly added duplicate record will be accessible in the usual way. If you intend to maintain duplicate input values for Ticker Symbols, and wish to be able to access then quickly with the find box, you may add them using a unique New Symbol that you can remember and use. For Example. You may add a duplicate record for INTC as INTC1 one INTC2,Etc. Thus, you will be able to maintain and refer to duplicate data input records for any Symbol you wish. But remember, it is up to you to recall the unique Symbol you have assigned to reference the record.

Using The - VALUATOR SOFTWARE - And Valuation Model

If you are new to using the Valuation Model, it would be helpful to define the terms applied. Most terms and definitions can be found in any dictionary of financial terminology. Some terms proprietary to our model can not be easily found, and are explained in this section of the user manual.

THE DATABASE:

Company Information And Recent Price			5 Year Growth
IBM	INT'L BUS MACH	95.4375	45
Computer/Periph			
Div And Yr.DivGrowth	Earnings -- EPS Growth -- Next Year EPS		Optionable
0.8	14.5	6.37 15.5	CBOE
		7.36	

When making changes to the values in the Database Fields, press the ENTER key and Valuation Model Results will Automatically Recalculate and Display the New Results.

Company Information And Recent Price		
TW	20TH CENTURY	25.75
Insurance: P/C		

- You may change the price or the Industry Group.

Div And 5Yr.DivGrowth
0.2 12.5

- The Dividend expressed in US Dollars and the 1 Year Expected Dividend Growth Rate -- e.i. Expected Dividend growth of 10% Per Year, Enter **10**.

Earnings -- EPS Growth -- Next Year EPS
6.37 15.5 7.36

- The expected Earnings Per Share and The **One Year** rate of Expected Growth in Earnings. If you expect earnings to grow 15% next year, then Enter **15**, **Next Year EPS** Will be Automatically Calculated and displayed.

5 Year Growth
-2

- The 5 Year Expected Growth Rate -- e.i. For An Expected growth of 10% Per Year, Enter **50**, 5Yr @ 10% . For 25% Per Year, Enter **125**. 5-Year Rate Of 25% Per Year.

Optionable
CBOE

- Whether Exchange Listed Options Are Traded On This Issue. If No Option trades on this issue Enter **NONE**.

Add New
Cancel

- These controls are used to modify the database. You may Add new records (which are positioned at the end of the current Database) or Cancel the addition of a record to the database. Other operations, such as delete, or changes made to values, are not affected by the use of the Cancel control.

Delete Current Record

- This Control Deletes the Current Record positioned in the Database Window. A dialog box will ask you to confirm this deletion. Any Record in the database may be deleted. Once a record is deleted it may NOT BE RECOVERED by the use of the Cancel control.



- **FIND** -- Begin Typing in this box and the Database will advance to the closest matching security in the database.

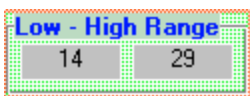


- Database Navigator Beginning of File - Back One Record, Forward One Record - End of File. Advancing to the next record will save any changes you have made to the database values.

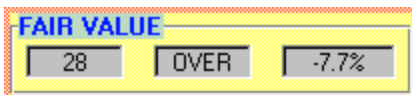
- But ONLY IF YOU HAVE Save This Record **Save This Record** Checked Before You Change Records.
- Save Changes to record **Save This Record** Must be checked for the changes you make to be saved to the database. Otherwise any changes you make will be discarded as soon as you move to a different record. This box will be automatically enabled when you add a new record, and automatically disabled when you move to a subsequent record.



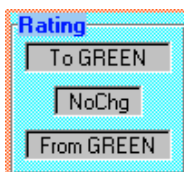
- **Value Growth** -- Value Growth is a measure of the anticipated growth and yield, discounted by P/E and expressed as a percentage. It represents the likely performance of a given issue relative to the market as a whole. Those greater than the current average or an arbitrary 100%, should perform better than the market average. Those less than the current average or an arbitrary 100% should perform less well than the market average. From time to time the average value of the market may vary from 60% to 120% depending on the selected universe of stock issues. This method gauges the growth and the cost of buying earnings for a given issue. OTC Stocks of course, should be expected to have higher values relative to large cap slower growth issues.



- **HIGH - LOW - FAIR** Based on current information, **FAIR** is our calculated **Fair Value** for this issue. The High and Low are the range of prices that should contain all movement in an issue's price. Extreme ranging in HIGH - LOW, as well as negative values, should alert the reader to potentially aberrant conditions that have skewed the valuation, thereby questioning it's validity. We question such issues and their values..



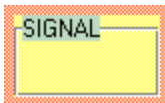
- **Percentage Over / Under** - Represents the percentage that the current price is Over or Under **Fair Value**.



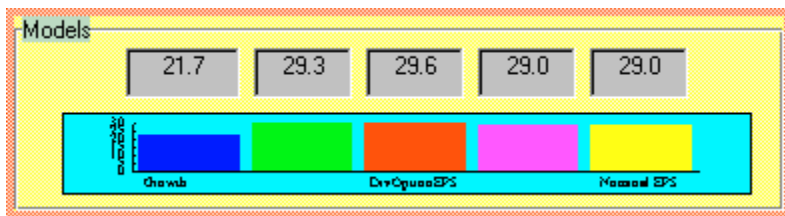
- **Color Designation** -- An important ingredient in the process of selection is our proprietary Color Designation assigned to each issue. Color Designation is determined on the basis of expected relative price movement primarily in the 3-6 month horizon and predicted relative market

performance in the year ahead. Upgrades and downgrades - in subsequent reports as shown by changes in color, should guide you in your decisions.

- **Yellow** -- The most positive of the designations indicates expected out performance. Cautious Buying and Holding for further appreciation is suggested. Issues dropping from Yellow to a lesser designation should be considered for sale.
- **Green** -- Green designations signal good opportunities for possible accumulation. Such issues are expected to perform in-line with the market overall. These issues may be held in anticipation of better future performance or upgrades in color.
- **Blue** -- Blue designations suggest under-performance relative to the market. Caution is in order. Issues rising from RED designation to blue may signal better potential. Falling color designation to BLUE should alert one to a potential for under-performance.
- **RED** -- Red designations identify issues to be avoided now. These issues are expected to under-perform significantly.
- **Clear** -- Issues designated as Clear are NOT RATED. Usually this designation marks the many over-the-counter issues which we do not rate.



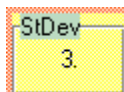
- **Signals** -- If the line: “Signal is; BUY or SELL” should appear, it is designed to alert the reader to a substantially over or under valued issue. Remember, an issue that is aberrantly over or under valued may be that way for good reason, such as news of takeovers or introduction of new products, and could stay in that condition for an extended time. In and of itself, this indicator should not cause the reader to act unless other values, signals, and further research on the readers part, confirm this indicator.



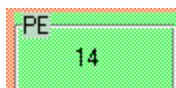
- **Model Values** -- Valuation is calculated using 5 different models. The values for these models are shown here as well as graphically represented. This can be used to see if any model in particular is generating unusual values.



- **Risk Model** -- Changing the valuation Risk Model will recalculate values. Prudent models will usually produce a lower Fair Value, than the aggressive model. Aggressive models assume a shorter time horizon and a smaller expected rate of return. Prudent models suggest purchase at a lower price with higher returns expected.



- **Standard Deviation** -- This is the variance in the 5 different Valuation models. In an ideal world this number will be small. Unusually high values suggest large differences in the values of the individual models.



- **PE** - The Price Earnings Ratio -- A conventional benchmark of valuation, PE Is The Price Divided By The Expected Earnings For A Given Issue. PE represents the relative cost of purchasing earning power.

Yield
3%

- Yield -- The Current Dividend Divided By The Price Of An Issue.

Option Prem
3%

- Options Premium -- Anticipated Return From The Sale Of Out Of The Money Covered Option Writes. Return can be enhanced by prudent sale of out of the money Puts and Calls, against long or short positions in the underlying stock.

PORTFOLIO AND LIST REPORTER

Portfolio Ticker Listing

PAGE 1 VALUATOR 2008 Portfolio Valuation Prudent Model 12/3/2007

SYMBOL	NAME	CURRENT PRICE	FAIR VAL	AVG PCT EARN	PRICE	VALUE	COLOR	CURRENT COLOR	FUND SIG	INDUSTRY GROUP
AA	ALCOA INC.	36.370	\$31	-15%	13	100%	NoChg	GREEN		Metals & Mining
AIG	AMER. INT'L GRO	57.300	\$74	29%	9	150%	NoChg	GREEN		Financial Svcs.
AXP	AMER. EXPRESS	58.080	\$46	-21%	17	91%	NoChg	GREEN		Financial Svcs.
BA	BOEING	92.500	\$98	5%	19	132%	NoChg	GREEN		Aerospace/Defen
C	CITIGROUP INC.	32.820	\$35	7%	13	148%	NoChg	BLUE		Financial Svcs.
CAT	CATERPILLAR INC	71.650	\$68	-5%	13	148%	NoChg	GREEN		Machinery
DD	DU PONT	46.270	\$39	-16%	15	103%	NoChg	GREEN		Chemical (Basic
DIS	DISNEY (WALT)	33.230	\$28	-15%	15	107%	NoChg	GREEN		Entertainment
GE	GEN'L ELECTRIC	37.890	\$32	-16%	17	100%	UP	YELLOW		Electrical Equi
GM	GEN'L MOTORS	29.630	\$28	-4%	-66	-47%	NoChg	GREEN		Auto & Truck
HD	HOME DEPOT	28.640	\$34	20%	12	88%	NoChg	GREEN		Retail Building
HON	HONEYWELL INT'L	56.740	\$49	-14%	18	103%	NoChg	GREEN		Diversified Co.
HPQ	HEWLETT-PACKARD	50.960	\$45	-11%	17	107%	DN	GREEN		Computers/Perip
IBM	INT'L BUSINESS	105.940	\$94	-12%	15	106%	NoChg	GREEN		Computers/Perip
INTC	INTEL CORP.	26.150	\$17	-34%	23	55%	DN	GREEN		Semiconductor
JNJ	JOHNSON & JOHNS	67.660	\$50	-27%	16	79%	NoChg	GREEN		Medical Supplie
JPM	JPMORGAN CHASE	45.420	\$43	-5%	10	162%	DN	BLUE		Bank
KO	COCA-COLA	62.180	\$43	-30%	23	62%	NoChg	GREEN		Beverage
MCD	MCDONALD'S CORP	58.860	\$45	-23%	20	79%	NoChg	GREEN		Restaurant
MMM	3M COMPANY	83.260	\$54	-35%	17	58%	NoChg	GREEN		Chemical (Diver
MO	ALTRIA GROUP	77.030	\$45	-42%	18	46%	NoChg	CLEAR	SELL	Tobacco
MRK	MERCK & CO.	59.130	\$39	-34%	20	62%	DN	BLUE		Drug
MSFT	MICROSOFT CORP.	33.550	\$30	-10%	19	105%	NoChg	GREEN		Computer Softwa
PFE	PFIZER INC.	23.720	\$22	-7%	11	104%	NoChg	GREEN		Drug
PG	PROCTER & GAMBL	74.090	\$54	-28%	21	69%	NoChg	GREEN		Household Produ
T	AT&T INC.	38.320	\$37	-3%	14	161%	NoChg	GREEN		Telecom. Servic
UTX	UNITED TECHNOLO	74.790	\$60	-20%	18	93%	DN	GREEN		Diversified Co.

Exit Print Fonts Save Load Select List

Portfolio List Report is a fully editable report window produced by loading Text File lists. These may be pre defined lists created with any text editor such as Notepad. List One Ticker on each Text Line.

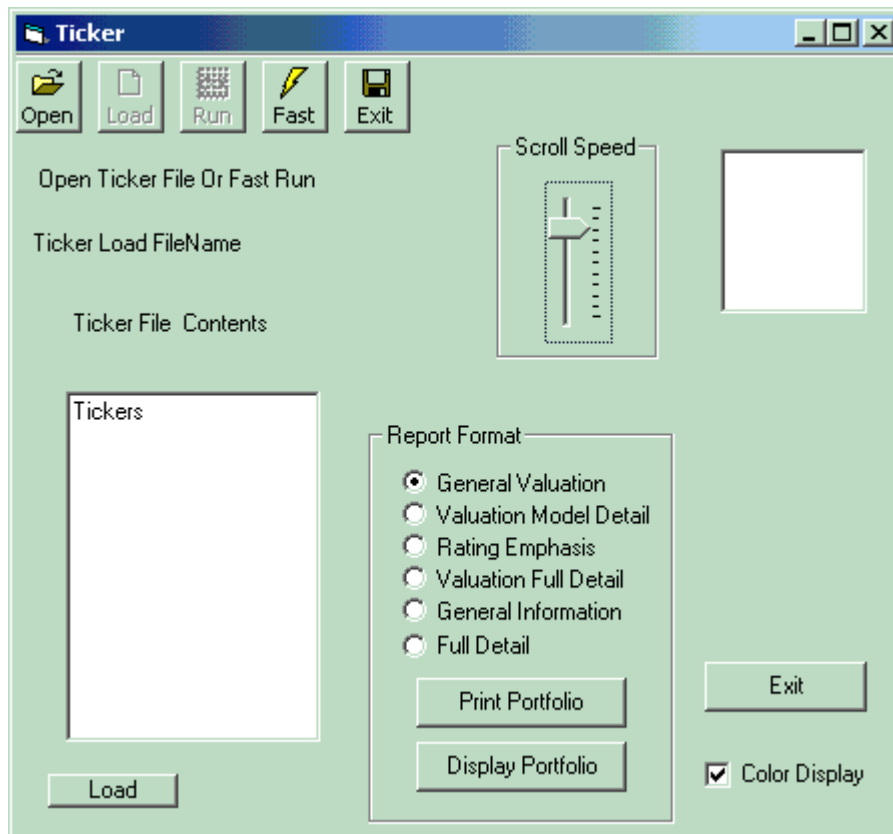
PORTFOLIO LIST LOAD AND AUTO DISPLAY

To Create or Edit A list Or Portfolio Use the LOAD button to select a Text File previously saved, or type the list into the Tickers window, then select SAVE and name the file.

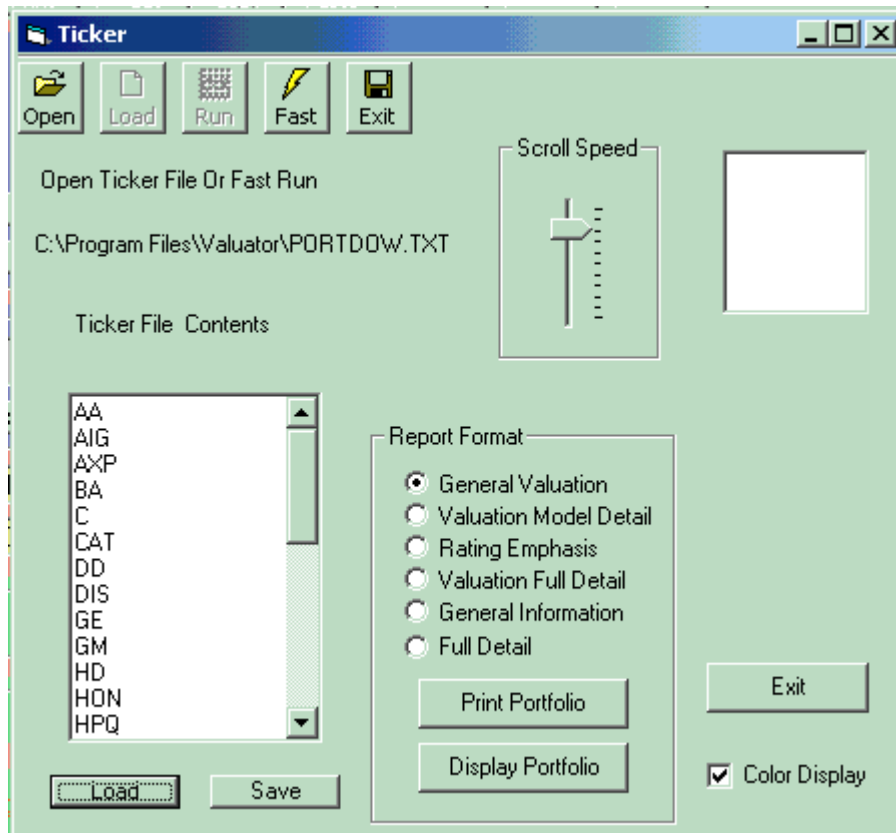
Auto Display

Auto Display Uses the default Ticker File To display the Tickers in the Valuator window. The Auto Display may be stopped by selecting the STOP Button.

To use AUTO DISPLAY, select OPEN Icon and choose a previously saved Text File. Then Select LOAD Icon Then RUN Icon. Scroll Speed may be adjusted with the Scroll Speed Slider Control. Alternately, you may select the FAST Icon to Load the default Ticker file and display will begin.



PORTFOLIO REPORT DISPLAY



To Create or Edit A list Or Portfolio Use the LOAD button to select a Text File previously saved, or type the list into the Tickers window, then select SAVE and name the file.

DISPLAY PORTFOLIO

To DISPLAY a portfolio Report Press DISPLAY PORTFOLIO Button and Select the Text File containing the ticker list. Portfolio Report window will Open and Display the list of all Found Tickers.

You may choose any of the REPORT FORMAT choices for PRINT or DISPLAY functions.

You may Also Select COLOR DISPLAY Check Box to determine whether or not display will be shown in color.

EXIT Button or EXIT Icon will close this window and return to main Valuator window.

PRINT Portfolio

To PRINT a portfolio Report Press PRINT PORTFOLIO Button and Select the Text File containing the ticker list. Portfolio Report will Print the list of all Found Tickers on the Printer you selected. You may choose any of the REPORT FORMAT choices for PRINT functions.

You may Also Select COLOR DISPLAY Check Box to determine whether or not display will be printed in color.

Remember Wide Reports will need to be printed in Landscape Printer Format in order to display correctly.

EXIT Button or EXIT Icon will close this window and return to main Valuator window.

Display PORTFOLIO

PAGE 1 VALUATOR 2008 Portfolio Valuation Prudent Model 12/3/2007										
SYMBOL	NAME	CURRENT PRICE	FAIR VAL	AVG PCT	PRICE EARN	VALUE GROWTH	COLOR CNG	CURRENT COLOR	FUND SIC	INDUSTRY GROUP
AA	ALCOA INC.	36.370	\$31	-15%	13	100%	NoChg	GREEN		Metals & Mining
AIG	AMER. INT'L GRO	57.300	\$74	29%	9	150%	NoChg	GREEN		Financial Svcs.
AXP	AMER. EXPRESS	58.080	\$46	-21%	17	91%	NoChg	GREEN		Financial Svcs.
BA	BOEING	92.500	\$98	5%	19	132%	NoChg	GREEN		Aerospace/Defen
C	CITIGROUP INC.	32.820	\$35	7%	13	148%	NoChg	BLUE		Financial Svcs.
CAT	CATERPILLAR INC	71.650	\$68	-5%	13	148%	NoChg	GREEN		Machinery
DD	DU PONT	46.270	\$39	-16%	15	103%	NoChg	GREEN		Chemical (Basic
DIS	DISNEY (WALT)	33.230	\$28	-15%	15	107%	NoChg	GREEN		Entertainment
GE	GEN'L ELECTRIC	37.890	\$32	-16%	17	100%	UP	YELLOW		Electrical Equi
GM	GEN'L MOTORS	29.630	\$28	-4%	-66	-47%	NoChg	GREEN		Auto & Truck
HD	HOME DEPOT	28.640	\$34	20%	12	88%	NoChg	GREEN		Retail Building
HON	HONEYWELL INT'L	56.740	\$49	-14%	18	103%	NoChg	GREEN		Diversified Co.
HPQ	HEWLETT-PACKARD	50.960	\$45	-11%	17	107%	DN	GREEN		Computers/Perip
IBM	INT'L BUSINESS	105.940	\$94	-12%	15	106%	NoChg	GREEN		Computers/Perip
INTC	INTEL CORP.	26.150	\$17	-34%	23	55%	DN	GREEN		Semiconductor
JNJ	JOHNSON & JOHNS	67.660	\$50	-27%	16	79%	NoChg	GREEN		Medical Supplie
JPM	JPMORGAN CHASE	45.420	\$43	-5%	10	162%	DN	BLUE		Bank
KO	COCA-COLA	62.180	\$43	-30%	23	62%	NoChg	GREEN		Beverage
MCD	MCDONALD'S CORP	58.860	\$45	-23%	20	79%	NoChg	GREEN		Restaurant
MMM	3M COMPANY	83.260	\$54	-35%	17	58%	NoChg	GREEN		Chemical (Diver
MO	ALTRIA GROUP	77.030	\$45	-42%	18	46%	NoChg	CLEAR	SELL	Tobacco
MRK	MERCK & CO.	59.130	\$39	-34%	20	62%	DN	BLUE		Drug
MSFT	MICROSOFT CORP.	33.550	\$30	-10%	19	105%	NoChg	GREEN		Computer Softwa
PFE	PFIZER INC.	23.720	\$22	-7%	11	104%	NoChg	GREEN		Drug
PG	PROCTER & GAMBL	74.090	\$54	-28%	21	69%	NoChg	GREEN		Household Produ
T	AT&T INC.	38.320	\$37	-3%	14	161%	NoChg	GREEN		Telecom. Servic
UTX	UNITED TECHNOLO	74.790	\$60	-20%	18	93%	DN	GREEN		Diversified Co.

Display Portfolio is a fully editable Rich Text Format window. The results may be SAVED to a File in either RTF or TEXT format. Saving in Text Format will not retain color settings, Saving in RTF format will retain color.

EXIT Button will CLOSE the Display Window.

PRINT Button will allow printer selection and will print window contents to your printer.

FONTS Button will Display Font Selection Boxes to directly edit the text in the window. DEFAULT Button will allow you to Select and Retain new default font settings for the Display Window. Remember, to use a FIXED PITCH font such as Courier, or the display may not retain proper column alignment.

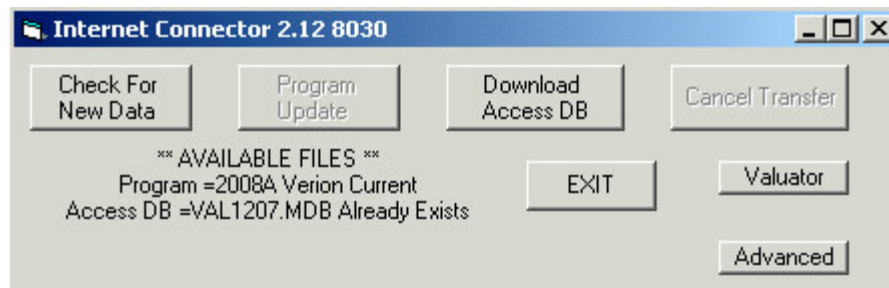
Keeping Your Data Up-To-Date

You Can Maintain Your Data By Manually Entering Changes To The Database And Saving The Records. For A Small Number Of Issues, This May Be Done By The User.

Database Updates Are Available For A Very Modest Cost From *MBAnalysis*.
Call Customer Service At 1-800-378-0920

MBAnalysis Internet Subscribers May Obtain The Latest Database For Download From The Subscriber Domain.

INTERNET DATABASE UPDATER



CHECKING FOR NEW DATA

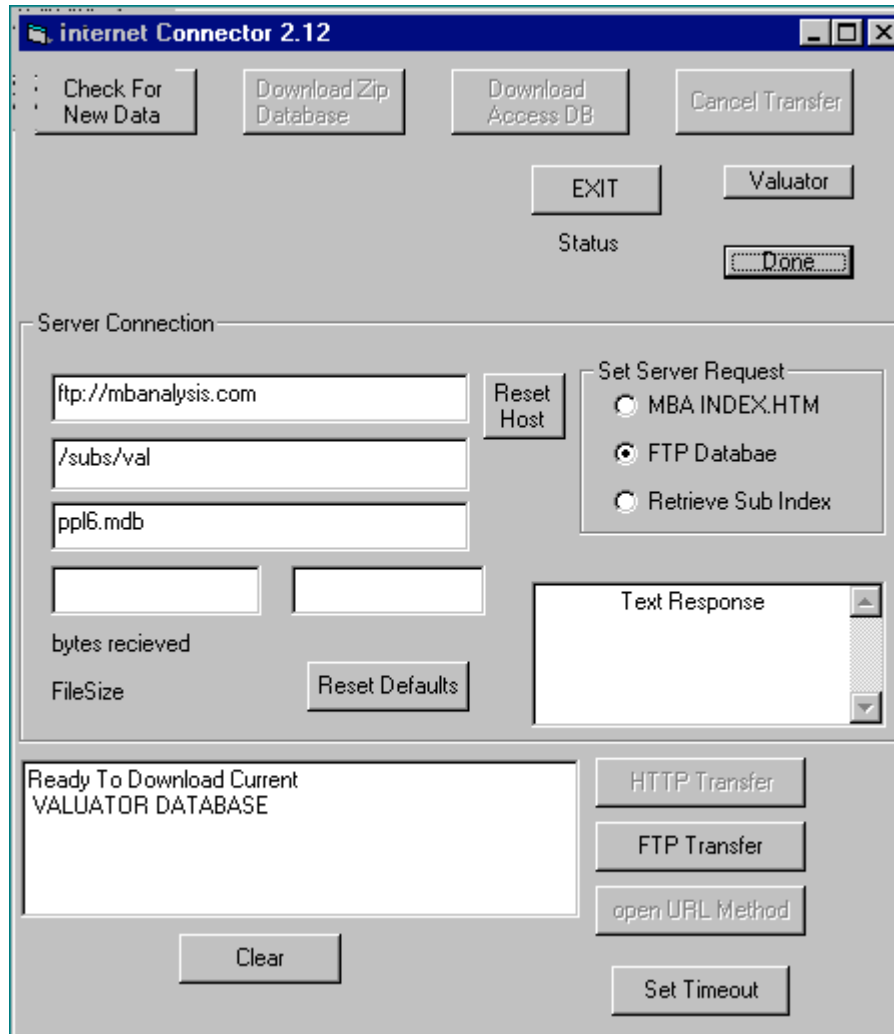
From the main Valuator Screen Select Either Icon



Click CHECK FOR NEW DATA Button If the database is current, it will indicate the file already exists. Download Access DB will Download the new database, or replace the current Database by the name shown. Any new Program Update Available will Enable The Program Update Button for Download.

INTERNET DATABASE SETTINGS

Advanced Settings



The Advanced Settings Panel allows the user to change the Internet Database retrieval settings. These should only be changed with guidance from software support. This panel is available to help assist in resolving any Internet Connection difficulties.

This panel may also be used to change your USER ID and PASSWORD settings.

DONE Button will return to the Internet Database Update Window.

Troubleshooting Installation

Always Install To The Default Directory \VALUATOR

Do Not Run Other Programs During The Installation.

If A Message Appears Asking To Replace Existing Files, Be Cautious **Not To Overwrite Any Windows Files** That May Be Used By Other Programs. **It Is Safe To Overwrite** Anything In The \VALUATOR Directory.

Troubleshooting Win 2007 Vista XP 2000 Win95-98 & NT Installation

For Win 2007 Vista XP 95-98 2000 & NT

Always Install To The Default Directory \Program Files\VALUATOR

Do Not Run Other Programs During The Installation.

If A Message Appears Asking To Replace Existing Files, Be Cautious **Not To Overwrite Any Windows Files** That May Be Used By Other Programs. **It Is Safe To Overwrite** Anything In The \VALUATOR Directory.

UNINSTALLING

UNINSTALLING Win2007 Vist XP 2000 Win 95-98 & NT

Go To Your Control Panel And Select ADD/REMOVE PROGRAMS. Select Valuator And Then Select Remove.

Troubleshooting Database Updates

If The Message Primary And Secondary Databases Are Not Working Appears, Make Sure To Install The Data Update To The Same Directory As Your Program.

You May Rename The Database File PPLS.mdb To Another Name. Then When You Restart The Valuator Program The User Database Will Become The Active Database. The User Database PPLU.mdb May Be Manipulated By The User With Other Programs Capable Of Reading Access Databases.

Data Entry And Calculations

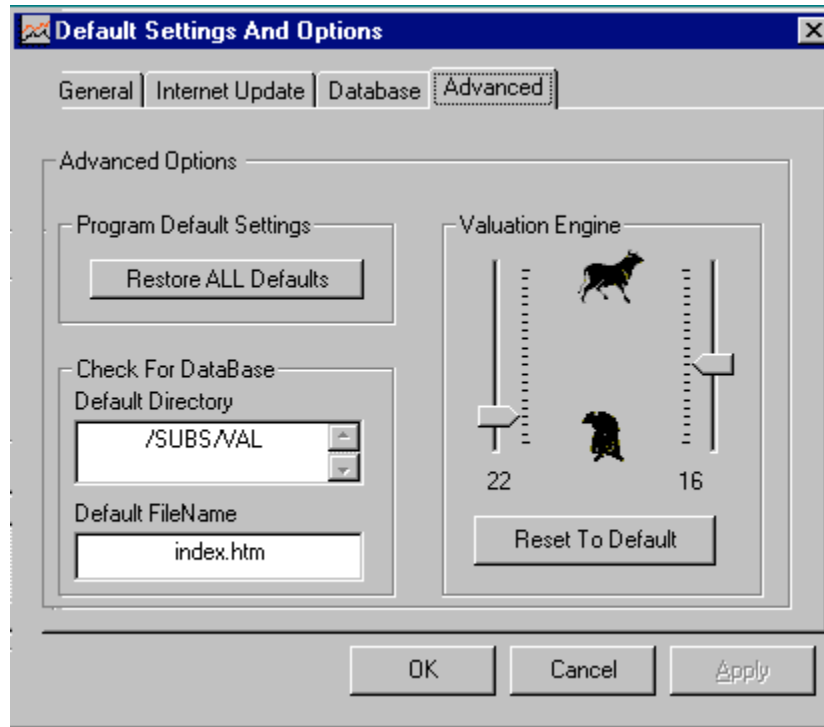
Q. Values Do Not Recalculate When Entered.

A. Press ENTER KEY After You Input Your Value.

Troubleshooting Program Bugs

Occasionally Program Bugs Surface That Were Not Caught In The Beta Test Versions. Send Us An Email Describing The Problem To: valuator@mbanalysis.com And An *MBAAnalysis* Software Programmer Will Respond As Soon As Possible.

DEFAULT SETTINGS ADVANCED OPTIONS



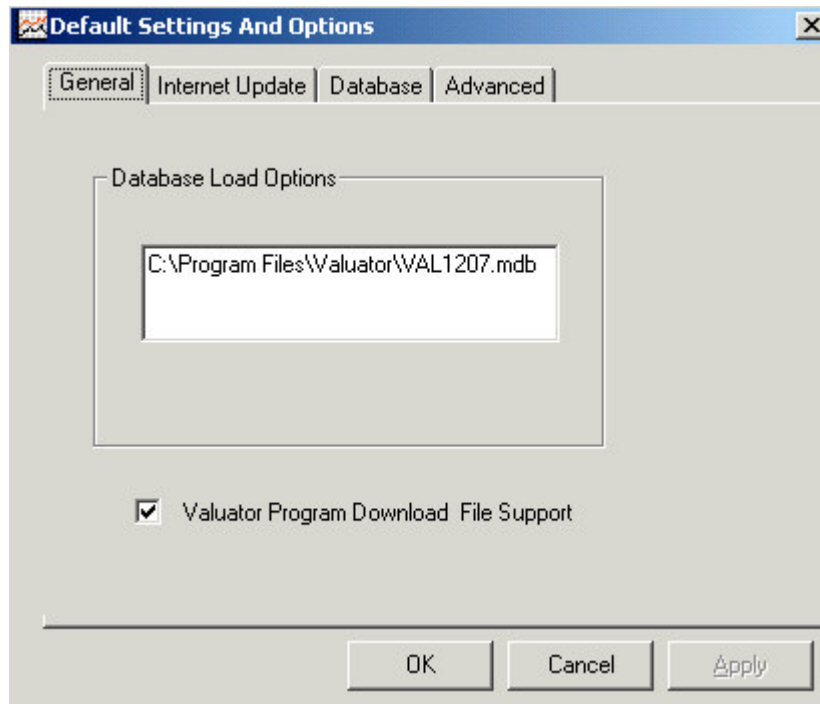
The Advanced Tab on the Default settings panel will allow the reset of all program default values. Press RESTORE ALL DEFAULTS Button the restart Valuator program.

VALUATION ENGINE

The discount values for all present value calculations may be altered. Prudent Model discount rate is set by variance of the Left Slider. Aggressive Model values are set by variance of the Right Slider control.

Reset To Default will restore the default values originally supplied.

DEFAULT SETTINGS DATABASE OPTIONS

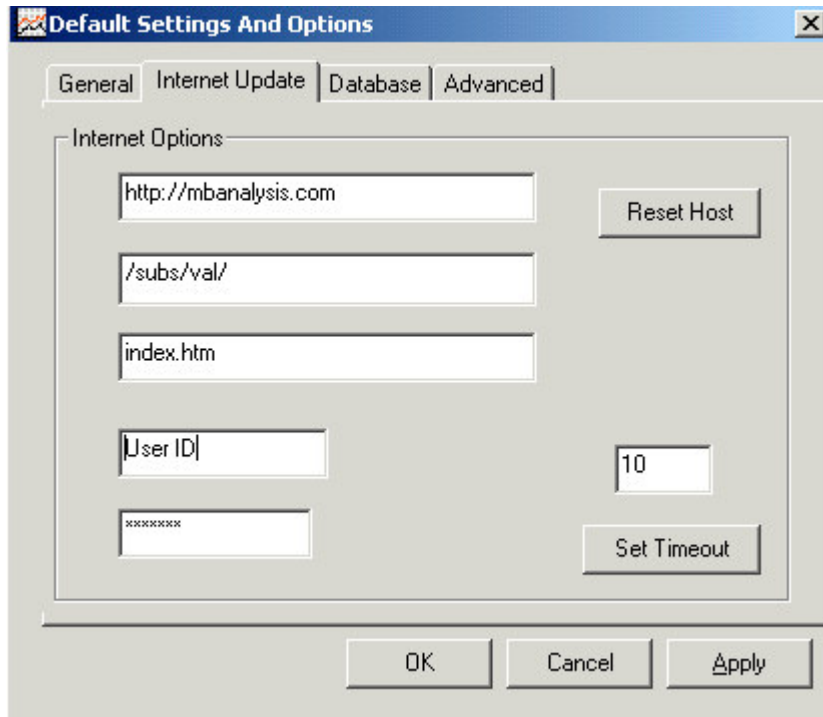


The Database Tab shows the location and name of the Current Default Database Filename.

Program Update Checking may be ENABLED By Checking Valuator Program Download File Support Check Box.

Program Update Checking may be DISABLED By Un Checking Valuator Program Download File Support Check Box.

DEFAULT SETTINGS INTERNET UPDATE OPTIONS

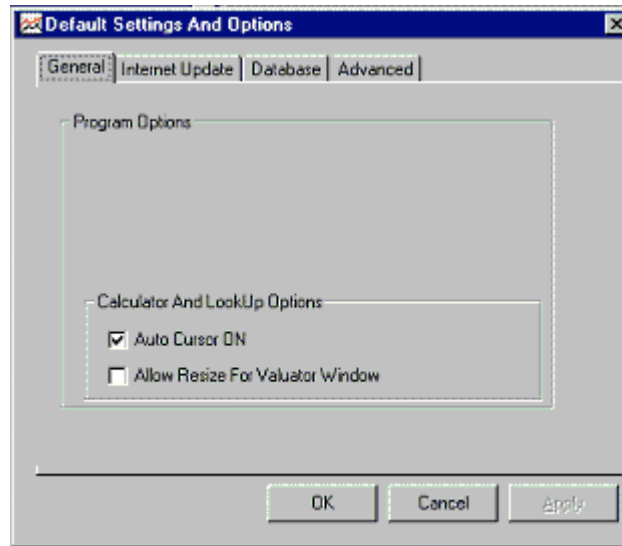


The Internet Update Tab Reflects the values set with the Advanced Settings Panel of the Internet Connector Database Updater.

Do Not Change These Settings unless Instructed by Software Support. Changes may affect your ability to Check for and Update your database from the web site.

USER ID and PASSWORD may be reset here.

DEFAULT SETTINGS GENERAL OPTIONS



The General Tab Allows the user to Enable or Disable The Auto Cursor function set at Program Startup.

Allow Resize For Valuator Window allows the main valuator window to be enlarged or reduced.

Index

—5—	5 Year Expected Growth Rate10	—E—	Earnings Per Share 10 Email20 End of File..... 11 End Of The File..... 9 ENTER KEY 8 EXIT 17 Expected Dividend Growth Rate..... 10 Extreme ranging in HIGH - LOW 11
—A—	aberrantly over or under valued12 Accessing User Records9 Active Database20 Add a New Record.....8 Add new.....10 ADD/REMOVE PROGRAMS19 Adding Records9 advance8 Advancing to the next record.....11 Agresssive models12 Auto Display.....14	—F—	FAIR 11 FIND 11 FONTS Button 17 Forward and Back Record..... 8 Forward One Record 11 Forward Record..... 8
—B—	Back One Record.....11 Back Record8 Beginning of File11 Blue12 BUY.....12	—G—	Green 12 Growth in Earnings 10
—C—	Cancel10 Cancel button.....8 CHECK FOR NEW DATA Button7, 17 CHECKING FOR NEW DATA17 Clear12 Color Designation11 Company.....8	—H—	HIGH - LOW - FAIR 11
—D—	Data Entry.....8 Database.....8 DATABASE10 Database Fields.....10 Default Directory19 DEFAULT SETTINGS ADVANCED OPTIONS.....21 DEFAULT SETTINGS DATABASE OPTIONS22 DEFAULT SETTINGS GENERAL OPTIONS.....24 DEFAULT SETTINGS INTERNET UPDATE OPTIONS23 Deletes the Current Record.....11 Display Portfolio.....15 Display PORTFOLIO16 Dividend10 duplicate records.....8	—I—	Industry Group 10 Install The Data Update.....20 Internet Database Download Updates 7 INTERNET DATABASE SETTINGS 18 INTERNET DATABASE UPDATER 17 <i>Introduction</i> 6
		—K—	<i>Keeping Your Data Up-To-Date</i> 17
		—L—	License Agreement 2 long or short positions..... 13
		—M—	Model Values 12 modify 8 modify the database..... 10

—N—

new record11
 NOT RATED12

—O—

Options10
 Options Premium13
 original database8
 original values8
 Over or Under fair value11

—P—

PE12
Percentage Over / Under11
 PORTFOLIO AND LIST REPORTER13
 Portfolio List Load And Auto Display14
 PORTFOLIO REPORT DISPLAY15
 PPLS.mdb20
 PPLSU.mdb20
 previous8
 Price Earnings Ratio12
 Primary And Secondary Databases Are Not Working20
 PRINT Button17
 PRINT Portfolio16
Program Bugs20
 Prudent and Aggressive8
 Prudent models12
 Puts and Calls13

—R—

recalculate8
 recalculate values12
 Recalculate When Entered20
RED12
 Rename The Database20

Replace Exiting Files 19
 Risk Model 12

—S—

Save THIS Record 8
 Saving Your Changes 8
 SELL 12
Signals 12
 Standard Deviation 12

—T—

Table Of Contents 4
Troubleshooting Database Updates 20
Troubleshooting Installation 19

—U—

UNINSTALLING 19
UNINSTALLING Win95 & NT 19
 Upgrades and downgrades 12
 User Database 20

—V—

Valuation Model 10
 valuator@mbanalysis.com 20
Value Growth 11

—W—

Windows NT and 95 7

—Y—

Yellow 12
 Yield 13



UNLEASH THE POWER !
MBAnalysis Value Investing Research



For More Information About Any Of Our Services:

Call Customer Service At 1-386 447-8148

Or

E-Mail Us At :

valuator@mbanalysis.com

For The Latest Database Update Or To Subscribe:

Credit Card Orders:

Please Call 1-386 447-8148

(Monday - Friday 9 am - 5 pm ET)

Stock Investors !

Fundamental Valuation For Your Stock Portfolio-
Are You Paying A Premium? Or Buying Your Stocks At A Discount?

Know Fair Value - Before You Act!

MBAnalysis
Value Investing Research

Valuator 2010 **With Portfolio Report**

Simple Yet Sophisticated Analysis For
Over 1800 Stocks Traded On The NYSE,
AMEX And NASDAQ.

Avoiding A Single Mistake Could Save You
Many Times The Cost Of The *Valuator*.

Add Extra Stocks To Your Database.
Change The Variables, See The Results.

Valuator Ver 2010 Includes
Web Site Database Updates
<i>1800 Stock Database - With coupon for FREE Update to the Latest Database.</i>
<i>Prudent And Aggressive Modeling to Satisfy the needs of different Investor Goals and Risk Tolerance.</i>

MBAnalysis -

Michael Breining

1-386 447-8148

International 386 447-8148

<http://mbanalysis.com>

Check Out Our Internet Resources.
We Offer Many On-line Tools To Help
Refine Investment Decisions.

Part No. 20100180

You must accept the enclosed License Agreement
Before you can use this product. If you Do Not
accept the terms of the License Agreement, you
should promptly return this product for a refund.

System Requirements:

For any 486, Pentium, or Pentium PRO system

- * Personal Computer with a 486/33 MHz or Higher processor.
- * 8 MB of memory; 16 recommended.
- * 4 MB of available hard-disk space.
- * 3 1/2" Floppy Disk Drive.
- * VGA or higher-resolution display adapter.
- * Mouse or compatible pointing device.

© 1997-2010 MBAnalysis. All Rights Reserved.

All Other trademarks and brand names are the property
of their respective owners.

30 days free technical support.

Media:

Valuator Ver. 2010 is distributed on CD-ROM Or By
Download at MBAnalysis.com

Version for the x86 platform is available directly from
MBAnalysis.

List Price \$ 39.95 US